



SITE LOCATION PROFILE



TABLE OF CONTENTS

1QTR 2011: \$CDN

1. KEY ECONOMIC INDICATORS.....p.2

- Economic Indicators
- Growth Rates
- Housing Starts
- Building Permits

2. DEMOGRAPHICS.....p.3

- Population
- Migration

3. BUSINESS ENVIRONMENT.....p.4

- Major Projects
- EcoVision Edmonton

4. TAXATION.....p.5

- Alberta Advantage
- Corporate Tax Comparison

5. COST OF BUSINESS.....p.7

- Occupancy Costs
- Labour Costs
- Utilities

6. MARKET ACCESS.....p.9

- Port Alberta
- Quality Highways
- Air Connections
- Railways

7. LABOUR FORCE.....p.10

- Availability of Skilled Labour
- Leading Employers & Major Players
- Education Achievement Levels
- Colleges & Universities

8. QUALITY OF LIFE.....p.13

- Living in Edmonton
- Housing
- Income
- Personal Tax Rate
- Neighbourhoods
- Nearby Communities
- Climate
- River Valley
- Arts & Culture
- Health Care
- Schools
- Sports & Recreation
- Green

9. INCENTIVES & PUBLIC FUNDING.....p.16

EXCHANGE RATE

Unless otherwise stated all dollar amounts are expressed in Canadian funds.

CONTACT INFORMATION

Kent McMullin
 Economic Development Officer
 Edmonton Economic Development Corp.
 9990 Jasper Avenue
 Edmonton, Alberta T5J 1P7
 Phone: (780) 917.7645
 Toll-Free Phone: 1.800.661.6965
 Fax: (780) 426.0535
 Email: kmcmullin@edmonton.com
www.edmonton.com/business

1. KEY ECONOMIC INDICATORS

ECONOMIC INDICATORS

Key Economic Indicators Metro Edmonton - January 2011				
Indicator	As of:	2011	2010	% Change
Labour Force	January	689,500	681,700	1.2%
Employment	January	651,500	635,700	2.7%
Unemployment Rate	January	5.5%	6.7%	-0.5%
Inflation Rate	January	1.2%	1.8%	-0.6
Housing Starts (YTD)	January	363	577	-21.6%
Average Residential Selling Price	January	\$291,619	\$302,439	-3.6%
Total Building Permits	January	\$148,850,000	\$175,183,700	-15.0%
Major Projects (millions) Northern Alberta	January	\$141,177.40	N/A	

Sources: Conference Board of Canada Winter 2011, Statistics Canada, CMHC, EREB, City of Edmonton, Alberta Finance and Enterprise.

GROWTH RATES

Forecast Growth Rate (%)						
Year	2010	2011f	2012f	2013f	2014f	2015f
GDP	3.6	2.8	4.1	3.6	3.5	3
Retail Sales	5.0	4.0	6.2	5.7	5.4	5.1

Source: Conference Board of Canada Winter 2011

HOUSING STARTS

Housing Starts						
Year	2010	2011f	2012f	2013f	2014f	2015f
Starts	19,620	20,357	21,592	22,845	24,077	25,272

Source: Conference Board of Canada Winter 2011

BUILDING PERMITS

January 2011 (YTD)	
Total	\$148,850,000
Commercial	\$28,783,600
Industrial	\$1,274,400
Institutional	\$555,500
Residential	\$117,963,100
Miscellaneous	\$273,400

Source: City of Edmonton, Planning and Development Department

POPULATION

According to the 2006 census release, the population of Greater Edmonton reached 1,034,945 persons, making it the fifth largest metropolitan region in Canada.

Population and Dwelling Counts	
	Edmonton (CMA) Total
Population in 2006	1,034,945
Population in 2001	937,845
2001 to 2006 population change (%)	10.4
Population Density per Square km	109.9
Land Area (square km)	9,417.88

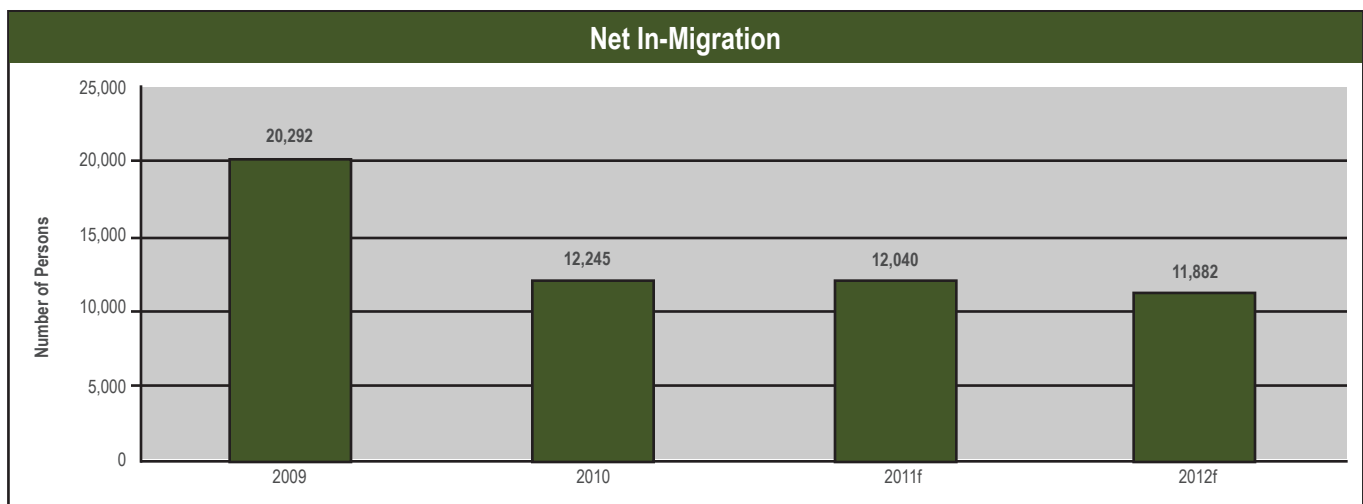
Source: Stats Canada, Census 2006

Age Characteristics			
Category	Edmonton (CMA) Total	Male	Female
Total Population	1,034,945	514,030	520,915
0-14 years	255,540	96,015	159,525
15-19 years	74,200	37,760	36,440
20-34 years	235,475	119,065	116,410
35-64 years	423,155	210,775	212,380
65+ years	114,825	50,415	64,410
Median age of Population	36.4	36	37.2
% of Population aged 15 and over	81.90%	81%	82.5%

Source: Stats Canada, Community Profiles, Census 2006

MIGRATION

Net migration in the Edmonton CMA has moved from a position of out-migration totalling 4,000 persons in 1995 to a positive in-migration of over 20,000 in 2009, according to the Conference Board of Canada. The influx of migrants and continued positive net migration has come from a substantial increase in the number inter-provincial and international moves.



Source: Conference Board of Canada, Metro Outlook, Winter 2011



3. BUSINESS ENVIRONMENT

Greater Edmonton is a politically stable region that promotes entrepreneurship, innovation and environmental sustainability. The region's business-friendly environment, coupled with strong economic performance, has attracted a growing number of major Capital projects. As well Edmonton acts as the primary logistical and service centre for Northern Alberta where \$141 billion of major new investments will take place over the next decade.

NORTHERN ALBERTA MAJOR PROJECTS

Summary by Industry Sector		
Industry	Value in Millions	Percent of Total
Agriculture and Related	\$176.00	0.12%
Biofuels	\$768.00	0.54%
Chemicals & Petrochemicals	\$77.50	0.05%
Commercial/Retail	\$1,676.60	1.19%
Commercial/Retail and Residential	\$36.00	0.03%
Forestry & Related	\$222.60	0.16%
Infrastructure	\$8,485.90	6.01%
Institutional	\$4,362.90	3.09%
Manufacturing	\$74.20	0.05%
Mining	\$4,945.00	3.50%
Oil, Gas & Oil Sands	\$101,877.60	71.35%
Other Industrial	\$1,485.70	1.05%
Pipelines	\$7,233.20	5.12%
Power	\$5,747.50	4.07%
Residential	\$2,504.70	1.77%
Telecommunications	\$6.00	0.00%
Tourism/Recreation	\$1,498.00	1.06%
Total	\$141,177.40	100.0%

Source: Alberta Finance and Enterprise, December 2010

COMMITTED TO KEEPING IT GREEN

In a thriving economy that is largely fueled by the energy sector, the City of Edmonton, in partnership with the provincial government, demonstrates a heightened sensitivity to environmental issues. We continue to pioneer initiatives in green construction, waste management and land reclamation. Edmonton is committed to investing in research, technology and innovation which create commercial value and achieve the highest standards of environmental performance. Edmonton is also a hub for a number of National Energy Centres of Excellence that drive and attract continued innovation into the region. These centres provide programming and grant funding to progressive researchers and companies developing technologies and processes that focus on reducing the impact of greenhouse gases and other emissions, as well as the consumption of water and gas.

The Way We Green project is the City's consultation with Edmontonians to develop a long-term environmental strategy for a sustainable community. The project focuses on managing environmental issues especially those related to water, air, fossil fuel, minerals and soil, climate, renewable resources, ecosystem services and waste absorption.

See www.edmonton.ca for more information.

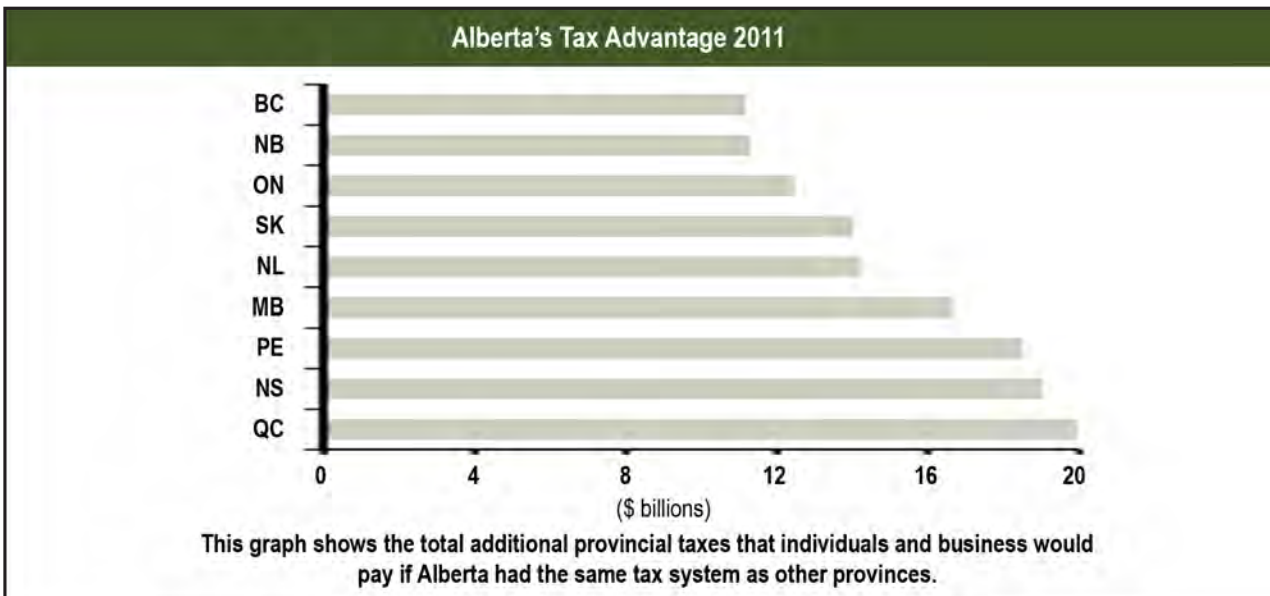


ALBERTA ADVANTAGE

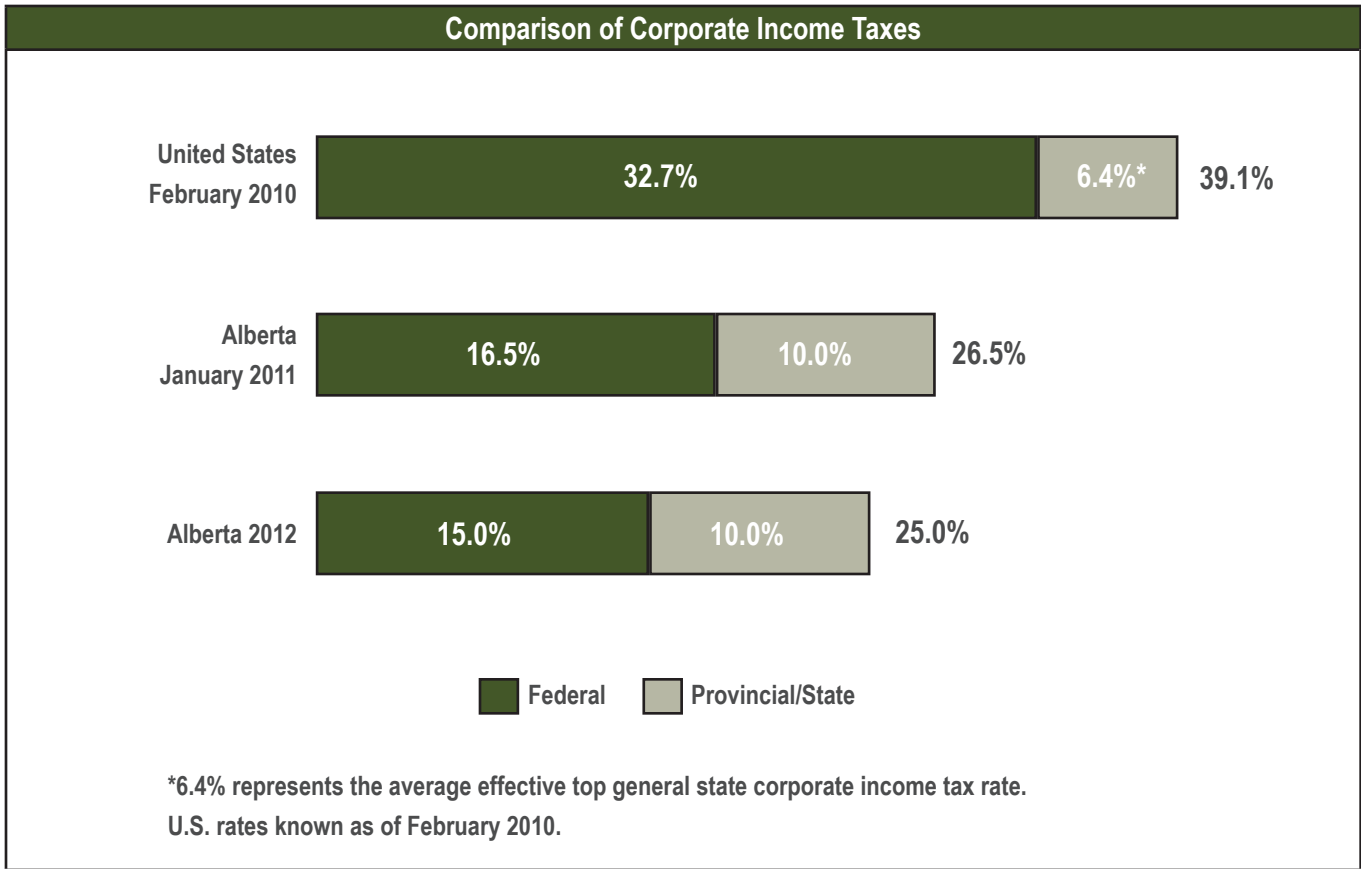
Greater Edmonton benefits from Alberta's tax regime, which is the lowest overall in Canada. Alberta has no provincial sales, capital, payroll or machinery and equipment taxes.

Corporate Investment Income Tax Rates - 2011				
Investment Income Earned by Canadian Controlled Private Corporations (CCPCs) (%)			Investment Income Earned by Other Corporations (Non-CCPCs) (%)	
Federal	34.67		18.00	
	Provincial/Territorial Rates	Combined Federal and Provincial/Territorial Rates	Provincial/Territorial Rates	Combined Federal and Provincial/Territorial Rates
Newfoundland and Labrador	14.00	48.67	14	30.50
Prince Edward Island	16.00	50.67	16.00	32.50
Nova Scotia	16.00	50.67	16.00	32.50
New Brunswick	10.50	45.17	11.90	28.40
Quebec	11.90	46.57	11.90	28.40
Ontario	11.75	46.42	11.75	28.25
Manitoba	12.00	46.67	12.00	28.50
Saskatchewan	12.00	46.67	12.00	28.50
Alberta	10.00	44.67	10.00	26.50
British Columbia	10.00	44.67	10.00	26.50
Northwest Territories	11.50	46.17	11.50	28.00
Nunavut	12.00	46.67	12.00	28.50
Yukon	15.00	49.67	15.00	31.50

Source: Alberta Finance and Enterprise



Source: Alberta Finance and Enterprise



Sources: Alberta Finance and Enterprise; Tax Foundation

Additional Tax Information	
Municipal tax information - City of Edmonton	 business > Assessment & Taxes">www.edmonton.ca > business > Assessment & Taxes
Federal, Provincial and Municipal Corporate Tax information	www.alberta-canada.com/investLocate/costAdvantages/taxation.cfm
For a more detailed view of Alberta's business cost competitiveness, please view 'Competitive Alternatives' -KPMG's guide to international business costs	www.competitivealternatives.com
Personal Tax Information	www.finance.gov.ab.ca/business/tax_rebates/bill18_personal/index.html

OCCUPANCY COSTS

Gross cost per square foot for the following downtown occupancy types:

Downtown Occupancy Costs	
	Average Asking Rates
Class AA	\$24.00
Class A	\$20.00
Class B	\$17.00
Class C	\$12.00

Source: Avison Young Office Market Report (Q4 2010)

Gross cost per square foot for the following industrial real estate types:

Industrial Occupancy Costs	
	Cost
Lease Rate	\$8.55 psf

Source: CBRichard Ellis

LABOUR COSTS

Average Weekly Earnings (Alberta 2010)	
All Industries	\$993.00

Source: Government of Alberta, Finance and Enterprise

Average Hourly Wages By Occupation (Alberta - June 2010)	
Management occupations	\$38.09
Business, finance and administrative occupations	\$23.46
Natural and applied sciences and related occupations	\$37.97
Health occupations	\$30.00
Occupations in social science, education, government service and religion	\$30.80
Occupations in art, culture, recreation and sport	\$23.85
Sales and service occupations	\$16.04
Trades, transport and equipment operators and related occupations	\$26.05
Occupations unique to primary industry	\$28.78
Occupations unique to processing, manufacturing and utilities	\$25.04

Source: Statistics Canada

5. COST OF BUSINESS (CONTINUED)

UTILITIES

NATURAL GAS

Natural gas is the cleanest, most cost effective and efficient source of energy. Rates are updated monthly.

Current regulated natural gas rate for commercial customers:

AltaGas Utilities - \$3.925/GJ

ATCO Gas - \$3.925/GJ

Direct Energy Regulated Services - \$3.850/GJ

Source: AltaGas Utilities Rate, Feb. 1-28, 2011

ATCO Gas Current Delivery Rates, Feb. 2011

Direct Energy Regulated Services Monthly Rate, Feb. 1-28, 2011

ELECTRICITY

Current regulated electricity rate for commercial customers:

Epcor - \$0.08976 /kWh

FortisAlberta - \$0.08909 /kWh

Source: Epcor Commercial Rate, February 2011

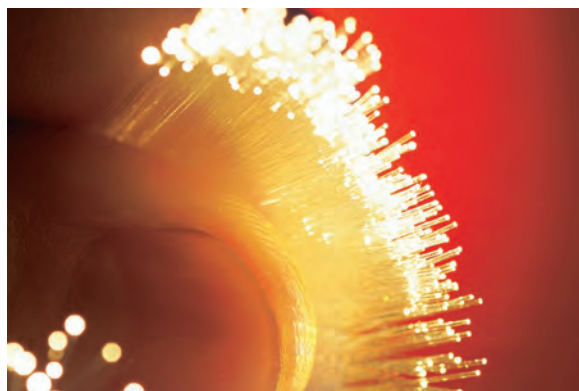
FortisAlberta, February 2011

WATER

Consumption rates for commercial customers per m3	
0-100 m3	\$1.14
100.1 - 1000 m3	\$1.05
1000 - 10500 m3	\$0.83
5000 m3	\$0.67

There is also a fixed monthly charge that ranges from \$5.73 to \$802.70 depending on meter size.

Source: Epcor 2010 Metered Water Rates for Edmonton Commercial Customers. Rates effective April 1, 2010.



TELECOMMUNICATIONS SERVICES

High-speed Internet access is readily available. Downtown is fiber-wired to the building and fiber links exist throughout the city; new facilities in the area can be wired within 3-4 weeks.

Businesses may choose one of the following leading providers to meet their telecommunications needs:

Telus – www.telus.com

Shaw – www.shaw.ca

Bell – www.bell.ca

Rogers – www.rogers.com





Edmonton is the closest major centre to the Alberta oil sands - the world's most politically stable oil supply. This proximity is strategically close to Canada's largest energy export market - the United States. Edmonton is also closer to many other centres, including Calgary, to more than half the top 100 population centres in North America, including Toronto, New York and Chicago.

PORT ALBERTA

- Port Alberta is an industry led transportation board which aims to combine air, rail and road transportation infrastructure at a single point through collaboration with Edmonton and Alberta-based businesses, with future connections to the Port of Prince Rupert and the Port of Vancouver
- Alberta is home to the world's second largest proven oil reserves. \$141 billion has been committed to oil sands development. Port Alberta will be the staging ground.
- The new frontier in energy development is the resource-rich Canadian North. Edmonton is the service centre for northern Canadian oil, gas and mining interests.
- Edmonton International Airport is positioned on northern global air routes and along major highways, giving Port Alberta convenient access to North America and the world via air and road.
- Port Alberta is linked by two Class 1 railways to two west coast ocean ports. Access to global trade is within 24 hours from Port Metro Vancouver and 44 hours from the Port of Prince Rupert.

Distance to Other Major Centres		
Consumer Market Location	Advantage: Edmonton "-" Calgary "+"	Advantage: Edmonton "-" Calgary "+"
Vancouver	+109.1 km	+1.8 hours
Winnipeg	-8.3 km	-0.1 hours
Toronto	-8.3 km	-0.1 hours
Seattle	+109.1 km	+1.8 hours
New York	-8.3 km	-0.1 hours
Chicago	-8.3 km	-0.1 hours
Nashville	-8.3 km	-0.1 hours
LA/San Fran	+148.6 km	+2.5 hours
Houston	+237.7 km	+4.0 hours

Source: Distance to Market (Western Canada) Study - Rise Analytics, May 2004

QUALITY HIGHWAYS

- The Trans-Canada Yellowhead Highway provides Greater Edmonton with easy access to Canada's east and west coast ports.
- Greater Edmonton is linked south to the U.S. and Mexico through the CANAMEX Trade Corridor.
- Greater Edmonton is also connected to the Alaska and Mackenzie Highways, offering direct access to the resource-rich northern regions in Canada and the U.S.
- The High Wide Corridor linking the US to the Alberta Oil Sands is the only one of its kind. The corridor allows for an increase of 300,000 pounds to be transported, increasing highway width by 10 feet and length of transport vehicle to 100 feet.

AIR CONNECTIONS

Edmonton International Airport

- Strategically located on the North-South Corridor.
- For three of the last 5 years Canada's fastest growing airport with 6.1 million passengers.
- Serves over 50 non-stop domestic, national and international destinations, including daily service to 10 key US destinations.
- Direct flight to London's Heathrow provides direct boost to international business, with one-stop connection to major destinations throughout Europe, the Middle East, India and Africa.
- In 2010, an additional carrier began providing flights to Frankfurt, Germany and Continental increased direct service to Houston.
- Curfew-free, 24-hour, 365-day services including customs and immigration.
- Warehousing and international cargo facilities.

RAILWAYS

- Class-1 rail services provided by Canadian National (CN) and Canadian Pacific (CP) Railways offer seamless connections to major North American markets. Edmonton is home to CN's western Canadian network operations centre.
- With its strong ties to the City and Port of Prince Rupert, CN's investment into the region, and gateway access to domestic and overseas markets, Greater Edmonton is poised to become a leading transportation and distribution hub and the strategic choice for global business.



7. LABOUR FORCE

Availability of Skilled Labour	
Net Migration	12,245
Population (CMA)	1,199,877
Employment	633,400
Employment Growth Rate	2.3%
New Persons Employed	14,000
Unemployment Rate	6.7%
Unionization Rate	25%

Sources: Conference Board of Canada, Stats Can, HRSDC Canada

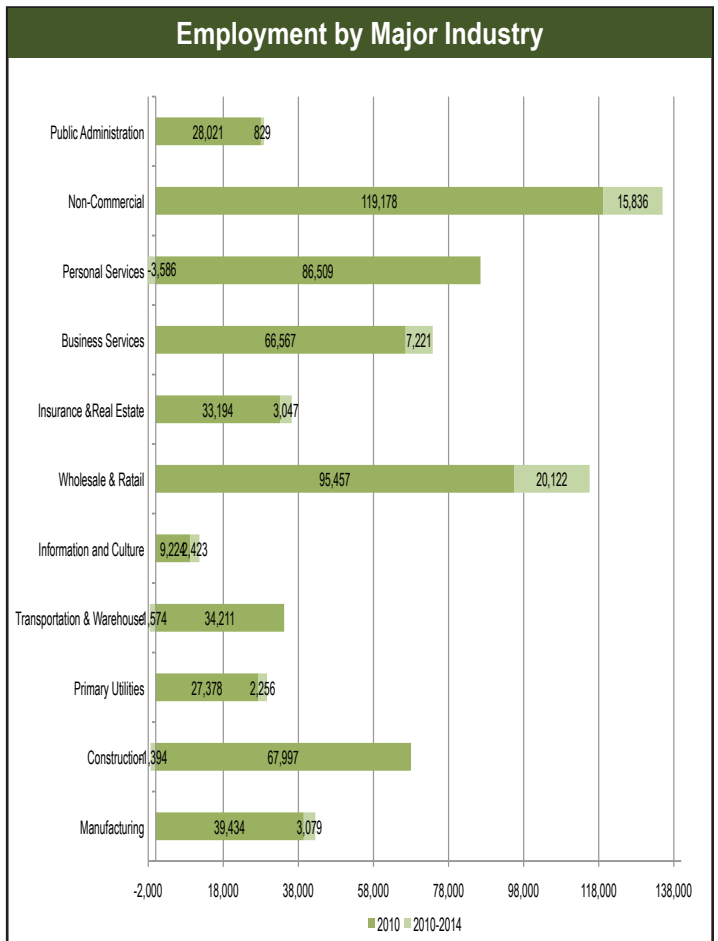
Employment by Major Industry		
Major Industry	2010	Changes in Employment 2010-2014
Manufacturing	39,434	3,079
Construction	67,997	-1,394
Primary Utilities	27,378	2,256
Transportation & Warehouse	34,211	-1,574
Information and Culture	9,224	2,423
Wholesale & Retail	95,457	20,122
Insurance & Real Estate	33,194	3,047
Business Services	66,567	7,221
Personal Services	86,509	-3,586
Non-Commercial	119,178	15,836
Public Administration	28,021	829

Source: Conference Board of Canada, Winter 2011

LEADING PRIVATE EMPLOYERS TOP 20

Leading Private Employers	
PCL Construction Group Inc.	4,400
CN Rail	3,181
Bee-Clean Building Maintenance Inc.	2,000
Alberta Health Services Board	1,983
Worley Parsons Canada Services Ltd.	1,750
EPCOR Utilities Inc.	1,500
ABC Benefits Corporation	1,450
Fountain Tire	1,400
Stantec Consulting Ltd.	1,025
Enbridge Pipelines Inc.	1,001
IBM Canada Limited	1,000
Convergys Customer Management Canada Inc.	900
Garda Canada Security Corporation	900
Stantec Inc.	900
Chemco Electrical Contractors Ltd.	800
Ledcor Industrial Limited Partnership	800
Canwest Publishing Inc.	748
Finning International Inc.	705
National Oilwell Canada Ltd.	977
Coal Valley Resources Inc.	650
Lafarge Canada Inc.	615

Source: Dunn & Bradstreet



Source: Conference Board of Canada, Winter 2011

Educational Achievement Levels		
Characteristics	Total	Share of Total
Total population 15 years and over	837,710	
No certificate; diploma or degree	182,185	21.7%
High school certificate or equivalent	219,435	26.2%
Apprenticeship or trades certificate or diploma	93,400	11.1%
College; CEGEP or other non-university certificate or diploma	154,550	18.4%
University certificate or diploma below the bachelor level	34,810	4.2%
University certificate; diploma or degree	153,330	18.3%

Source: Stats Canada, Census 2006

COLLEGES & UNIVERSITIES

There are 9 universities and colleges serving the area, with a total enrollment of nearly 150,000 full and part-time students, including distance learning. The top 3 schools are profiled below.

University of Alberta

- One of the top funded universities in Canada with over \$450 million in external research funding.
- Greater Edmonton and Alberta's flagship institution.
- Enrolment: 36,000+ full- and part- time undergraduates and graduates.
- 18 Faculties.
- Unique programming; Nanotechnology, combined MBA programs, numerous bilingual degrees, 5-year Education combined degrees, ground breaking research programs in science, engineering and medicine.
- University of Alberta provides scholarships, awards and bursaries totalling over \$69 million.

www.ualberta.ca

Northern Alberta Institute of Technology (NAIT)

- Northern Alberta's foremost technical and trades school.
- On track to being Canada's largest technical school, training more apprentices than any other institution in Canada, with 95% employability rate.
- Enrolment: 48,500.
- Campuses: 4.
- Number of programs: over 200 programs, plus apprenticeship programs and over 1,400 continuing education programs.
- Unique programs: The two new NAIT in Motion mobile education units which are equipped as trade shops to bring the technology to the learner in remote communities, rather than bringing the learner to the technology. The NAIT in Motion units are outfitted to deliver trades-related training in millwright, pipefitting, steam fitting, gas fitting, welding, machining, electrical and plumbing.

www.nait.ca

Grant MacEwan University

- Enrolment: 40,700.
- Number of campuses: 4.
- Number of programs: 5 Bachelor Degrees, 10 University transfer programs, 4 Applied Bachelor Degrees, and over 60 diploma and certificate programs.

www.macewan.ca

8. QUALITY OF LIFE

LIVING IN EDMONTON

Businesses are not the only ones enjoying life in Greater Edmonton thanks to a high disposable income, low personal tax burden, affordable housing and an abundance of recreational opportunities.

HOUSING

Housing in Edmonton remains among the most affordable of any major Canadian city. Housing options include single-detached houses in new and mature neighbourhoods, downtown lofts and condos, and acreage properties within the surrounding area.

Residential Selling Prices	
Residential average price	\$310,766
SFD average selling price (June 2010)	\$356,276
SFD median selling price	\$349,900
Condo average selling price	\$220,994

Source: EREB, January 2011

Private Apartment Average Rents Edmonton CMA	
Bachelor	\$708
1 Bedroom	\$843
2 Bedroom	\$1,015
3 Bedroom+	\$1,171
Total (October)	\$917

Source: EREB, January 2011

INCOME

Edmontonians experience a higher per capita disposable income than the national average and higher than Canada's largest centres, Toronto and Vancouver.

Annual Average of Personal Disposable Income Per Capita				
City	2008	2009	2010	2011f
Edmonton	\$29,614.37	\$29,571.82	\$29,354.74	\$29,271.91
Toronto	\$26,651.20	\$26,141.75	\$26,387.90	\$26,354.24
Vancouver	\$26,247.53	\$25,791.95	\$25,985.54	\$25,933.42
Canada	\$25,012.57	\$25,047.10	\$25,346.28	\$25,393.98

Source: Conference Board of Canada, Metro Outlook, Winter 2011

Personal Income Per Capita	
Region	2011f
Edmonton	\$47,167
Alberta	\$50,635
Canada	\$38,704

Source: Conference Board of Canada, Metro Outlook, Winter 2011

PERSONAL TAX RATE

Being located in the province of Alberta, Edmonton benefits from a low single rate tax system, including the highest basic and spousal exemptions in the country, no general sales tax, the lowest gasoline tax rate, and no health care premiums.

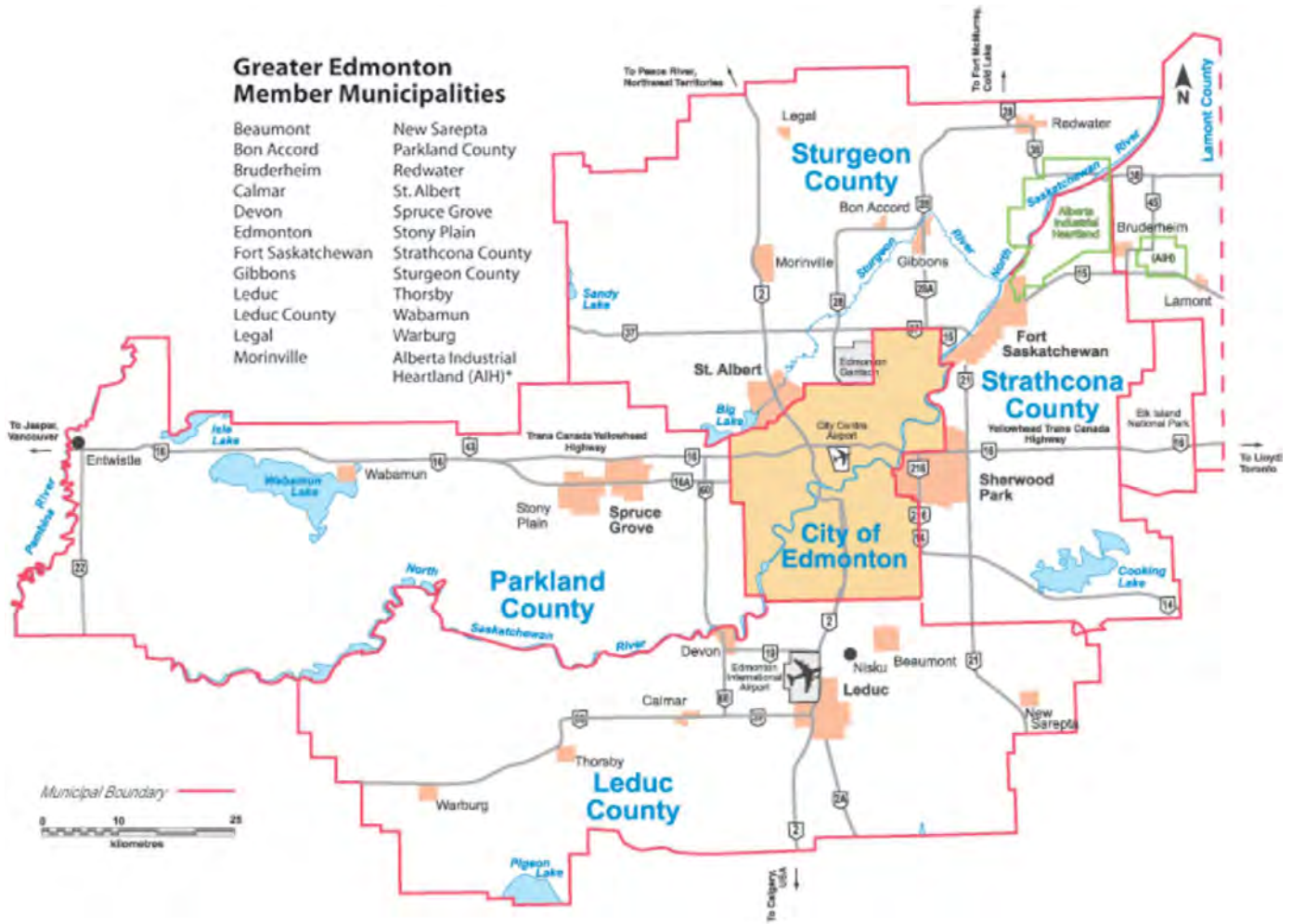
NEIGHBOURHOODS

Edmonton's safe and community-oriented neighbourhoods are profiled at www.edmonton.com/for_residents/neighbourhoods

NEARBY COMMUNITIES

Greater Edmonton is comprised of 35 municipalities, 24 of which are considered major municipalities.

GREATER EDMONTON



8. QUALITY OF LIFE (CONTINUED)

CLIMATE

- The region has two dominant seasons: winter averages 121 days, and summer averages 111 days. The transition seasons are shorter; fall averages 70 days while spring averages 63 days.
- Edmonton has a northern mid-latitude climate with very long summer days and up to 2,300 hours of sunlight per year (up to 17 hours per day).
- Climate rated milder than other Canadian cities; weather can be accurately compared to Chicago, IL.

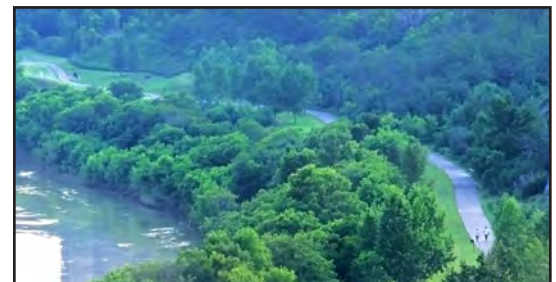
Average Temperature in Edmonton														
		JAN	FEB	MAR	APR	MAY	JUN	JUL	AUG	SEP	OCT	NOV	DEC	Annual Average
Daily Maximum	°C	-7.3	-3.6	2.1	11.3	17.6	21.0	22.8	22.1	16.8	10.9	0.0	-5.4	9.0
	°F	18.9	25.5	35.8	52.3	63.7	69.8	73	71.7	62.2	51.6	32	22.3	48.2
Daily Minimum	°C	-16.0	-13.1	-7.3	-0.3	5.7	10.0	12.1	11.1	5.8	0.3	-8.2	-13.9	-1.2
	°F	3.2	8.4	18.9	31.5	42.3	50	53.8	51.9	42.4	32.5	17.2	6.9	29.8
Relative Humidity %	6 am	74.3	75.1	76.3	72.5	69.9	76.1	81.0	84.2	82.4	75	77.6	74.5	76.6
	3 pm	66.6	62.5	57.7	43.4	40.8	48	52.3	52.8	51.9	49.6	64.5	67.2	54.8

Average Precipitation in Edmonton														
		JAN	FEB	MAR	APR	MAY	JUN	JUL	AUG	SEP	OCT	NOV	DEC	Annual Average
Rainfall	(mm)	1.3	0.9	2.1	13.1	45.1	87.1	91.7	68.9	42.3	10.5	1.9	0.8	365.7
	(in)	0.05	0.04	0.08	0.52	1.78	3.43	3.61	2.71	1.67	0.41	0.07	0.03	14.40
Snowfall	(cm)	24.5	15.8	16.8	13.4	3.5	0.0	0.0	0.0	1.5	7.8	17.9	22.3	123.5
	(in)	9.65	6.22	6.61	5.28	1.38	0.0	0.0	0.0	0.59	3.07	7.05	17.9	48.62
Precipitation	(mm)	22.5	14.6	16.6	26.0	49.0	87.1	91.7	69.0	43.7	17.9	17.9	20.9	476.9
	(in)	0.89	0.57	0.65	1.02	1.93	3.43	3.61	2.72	1.72	0.70	0.70	0.82	18.78

Sources: The Climate of Edmonton, Environment Canada and Places Related Almanac

RIVER VALLEY

- Edmonton's river valley is North America's largest urban park space, 22 times larger than Central Park in New York.
- Over 150-kilometers of relatively untouched green-space, with trails available for walking, biking and cross-country skiing.
- The river valley ribbons through the heart of the city, accessible to downtown residents.



ARTS & CULTURE

- 2007 Cultural Capital of Canada.
- 30+ year-round festivals devoted to music, theatre, visual arts and cultural diversity.
- World-class performance venues, museums and art galleries.
- Thriving performing arts scene featuring live theatre, concerts, symphony, opera and ballet.



8. QUALITY OF LIFE (CONTINUED)

HEALTH CARE

- Home to 13 hospitals and 2 primary care centres.
- Mazankowski Heart Institute, Canada's undisputed heart transplant leader.
- Stollery Children's Hospital is western Canada's referral centre for pediatric cardiac surgery and national leader in organ transplant.

SCHOOLS

- Publically funded K-12 school system.
- Leader across North America in boundary-less school zoning.
- Edmonton's Catholic Schools is the first district in Canada to offer all three International Baccalaureate Programmes including:
 - Primary year programme: Grades K to 6.
 - Middle years programme: Grades 7 to 10.
 - Diploma programme: Grades 11 and 12.

SPORTS & RECREATION

- 70+ area golf courses.
- Gateway to the Canadian Rockies.
- Home to West Edmonton Mall.
- Host to major athletics events.
- Professional and amateur sports teams including the Edmonton Oilers (NHL) and Edmonton Eskimos (CFL).



9. INCENTIVES & PUBLIC FUNDING

INCENTIVES & PUBLIC FUNDING

The Province of Alberta and the City of Edmonton offer the best overall operating costs in the form of low taxes. No tax abatement programs, infrastructure development or real estate fit-out assistance programs are offered.

Edmonton Economic Development Corporation works with the local real estate community to offer a complimentary site selection service. Colleges and Universities provide specialized training programs to companies.

The Province of Alberta and the Federal Government support these programs. Funds are directed to programs at NAIT, the University of Alberta, Grant MacEwan, etc. as assistance to industry.